

# リサフランク420 / 現代のコンピュー

Lisa Frank 420 / Modern Computing

Macintosh Plus  
Arr. by B.R. Ludlow

## VAPOR GROOVE (♩ = c.90)

Em<sup>9</sup> F#m<sup>7</sup>/A Em<sup>9</sup> F#m<sup>7</sup>/A

R.H. Electric Piano

L.H. Synth

5 Em<sup>9</sup> F#m<sup>7</sup>/A C#m(ADD4) G A

9 Em<sup>9</sup> F#m<sup>7</sup>/A Em<sup>9</sup> F#m<sup>7</sup>/A

13 Em<sup>9</sup> F#m<sup>7</sup>/A C#m(ADD4) G A Fine

### A First Solo (Play A 4x)

17 Em<sup>9</sup> F#m<sup>7</sup>/A Em<sup>9</sup> F#m<sup>7</sup>/A

Hits 2nd/4th x only

21 Em<sup>9</sup> F#m<sup>7</sup>/A C#m(ADD4) G A

2

Keys

**B** Additional Solos (Play B 2x followed by A 2x)

25  $D^{maj7}$   $G^{maj7}$   $D^{maj7}$   $G^{maj7}$

29  $D^{maj7}$   $G^{maj7}$   $C\#m(ADD4)$   $G$   $A$

Hits 2nd x only

**C** Last Solo (Continue solo to Fine)

33  $G$   $A$   $F\#m7$   $Bm$   $G$   $A$   $F\#m7$   $Bm$   $A6(ADD4)$   $G$   $A$

38  $F\#m7$   $Bm$  1.  $C\#m(ADD4)$  2.  $G$   $A$  **D.C. al Fine**

# リサフランク420 / 現代のコンピュー

## Lisa Frank 420 / Modern Computing

Macintosh Plus  
Arr. by B.R. Ludlow

### VAPORGROOVE (♩ = c.90)

Em<sup>9</sup> F#m7/A Em<sup>9</sup> F#m7/A

*Tacit until m 8 on head in*

5 Em<sup>9</sup> F#m7/A C#m(ADD4) G A

9 Em<sup>9</sup> F#m7/A Em<sup>9</sup> F#m7/A

13 Em<sup>9</sup> F#m7/A C#m(ADD4) G A **Fine**

#### A First Solo (Play A 4x)

17 Em<sup>9</sup> F#m7/A Em<sup>9</sup> F#m7/A

Hits 2nd/4th x only

21 Em<sup>9</sup> F#m7/A C#m(ADD4) G A

#### B Additional Solos (Play B 2x followed by A 2x)

25 Dmaj7 Gmaj7 Dmaj7 Gmaj7

Hits 2nd x only

29 Dmaj7 Gmaj7 C#m(ADD4) G A

#### C Last Solo (Continue solo to Fine)

33 G A F#m7 Bm G A F#m7 Bm A6(ADD4) G A

38 F#m7 Bm 1. C#m(ADD4) 2. G A **D.C. al Fine**

Lisa Frank 420 / Modern Computing

Macintosh Plus  
Arr. by B.R. Ludlow

VAPORGROOVE (♩ = c.90)

Em<sup>9</sup> F#m7/A Em<sup>9</sup> F#m7/A

5 Em<sup>9</sup> F#m7/A C#m(ADD4) G A

9 Em<sup>9</sup> F#m7/A Em<sup>9</sup> F#m7/A

13 Em<sup>9</sup> F#m7/A C#m(ADD4) G A **Fine**

**A** First Solo (Play A 4x)

17 Em<sup>9</sup> F#m7/A Em<sup>9</sup> F#m7/A

Hits 2nd/4th x only

21 Em<sup>9</sup> F#m7/A C#m(ADD4) G A

**B** Additional Solos (Play B 2x followed by A 2x)

25 Dmaj7 Gmaj7 Dmaj7 Gmaj7

Hits 2nd x only

29 Dmaj7 Gmaj7 C#m(ADD4) G A

**C** Last Solo (Continue solo to Fine)

33 G A F#m7 Bm G A F#m7 Bm A6(ADD4) G A

38 F#m7 Bm 1. C#m(ADD4) 2. G A **D.C. al Fine**

# リサフランク420 / 現代のコンピュー

Lisa Frank 420 / Modern Computing

Macintosh Plus  
Arr. by B.R. Ludlow

## VAPOR GROOVE (♩ = c.90)

4

9

**A** First Solo (Play A 4x)

17

21

**B** Additional Solos (Play B 2x followed by A 2x)

25

29

**C** Last Solo (Continue solo to Fine)

33

38

# リサフランク420 / 現代のコンピュー

Lisa Frank 420 / Modern Computing

Macintosh Plus  
Arr. by B.R. Ludlow

VAPOR GROOVE (♩ = c.90)

5

9

13

Fine

**A** First Solo (Play A 4x)

17

F#m<sup>9</sup> G#m<sup>7</sup>/B F#m<sup>9</sup> G#m<sup>7</sup>/B

21

F#m<sup>9</sup> G#m<sup>7</sup>/B D#m(ADD4)

Hits 2nd/4th x only  
A B

**B** Additional Solos (Play B 2x followed by A 2x)

25

Ema<sup>3</sup>7 Ama<sup>3</sup>7 Ema<sup>3</sup>7 Ama<sup>3</sup>7

29

Ema<sup>3</sup>7 Ama<sup>3</sup>7 D#m(ADD4)

Hits 2nd x only  
A B

**C** Last Solo (Continue solo to Fine)

33

A B G#m<sup>7</sup> C#m A B G#m<sup>7</sup> C#m B6(ADD4) A B

38

G#m<sup>7</sup> C#m 1. D#m(ADD4) 2. A B D.C. al Fine

# リサフランク420 / 現代のコンピュー

Lisa Frank 420 / Modern Computing

Macintosh Plus

Arr. by B.R. Ludlow

VAPOR GROOVE (♩ = c.90)



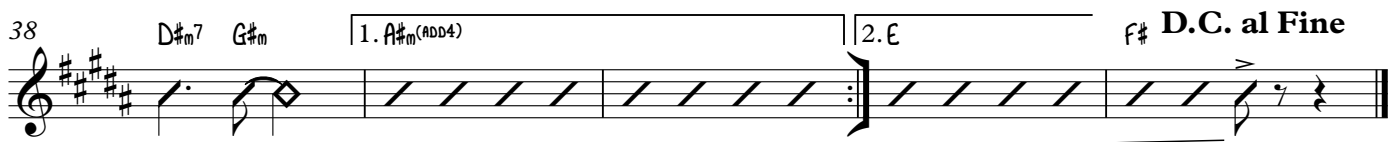
**A** First Solo (Play A 4x)



**B** Additional Solos (Play B 2x followed by A 2x)



**C** Last Solo (Continue solo to Fine)



# リサフランク420 / 現代のコンピュー

Lisa Frank 420 / Modern Computing

Macintosh Plus  
Arr. by B.R. Ludlow

VAPOR GROOVE (♩ = c.90)

Opt. Harmon Mute

5

9

13

Fine

**A** First Solo (Play A 4x)

17

F#m9 G#m7/B F#m9 G#m7/B

21

F#m9 G#m7/B D#m(ADD4)

Hits 2nd/4th x only

A B

**B** Additional Solos (Play B 2x followed by A 2x)

25

EmaJ7 AmaJ7 EmaJ7 AmaJ7

29

EmaJ7 AmaJ7 D#m(ADD4)

Hits 2nd x only

A B

**C** Last Solo (Continue solo to Fine)

33

A B G#m7 C#m A B G#m7 C#m B6(ADD4) A B

38

G#m7 C#m

1. D#m(ADD4) 2. A

B D.C. al Fine